

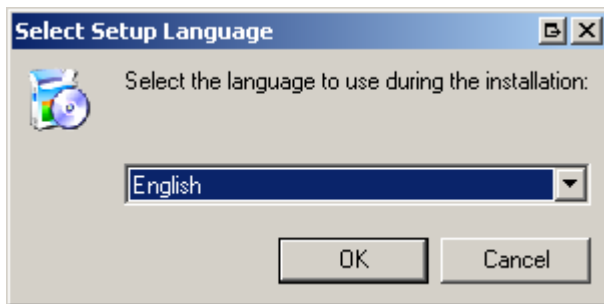
Reflection Backup Manager Installation Guide for Windows®

(For all other operating systems, please refer to the User Guide.)

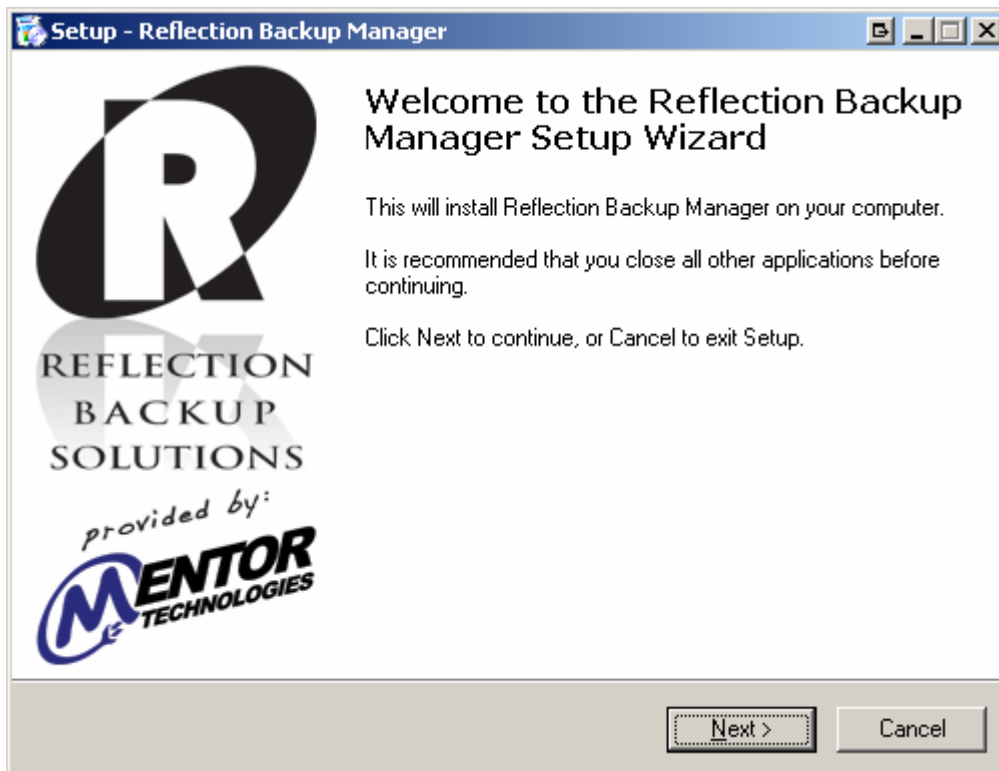
1. After downloading the installation file, double click on the icon to start the installation process.



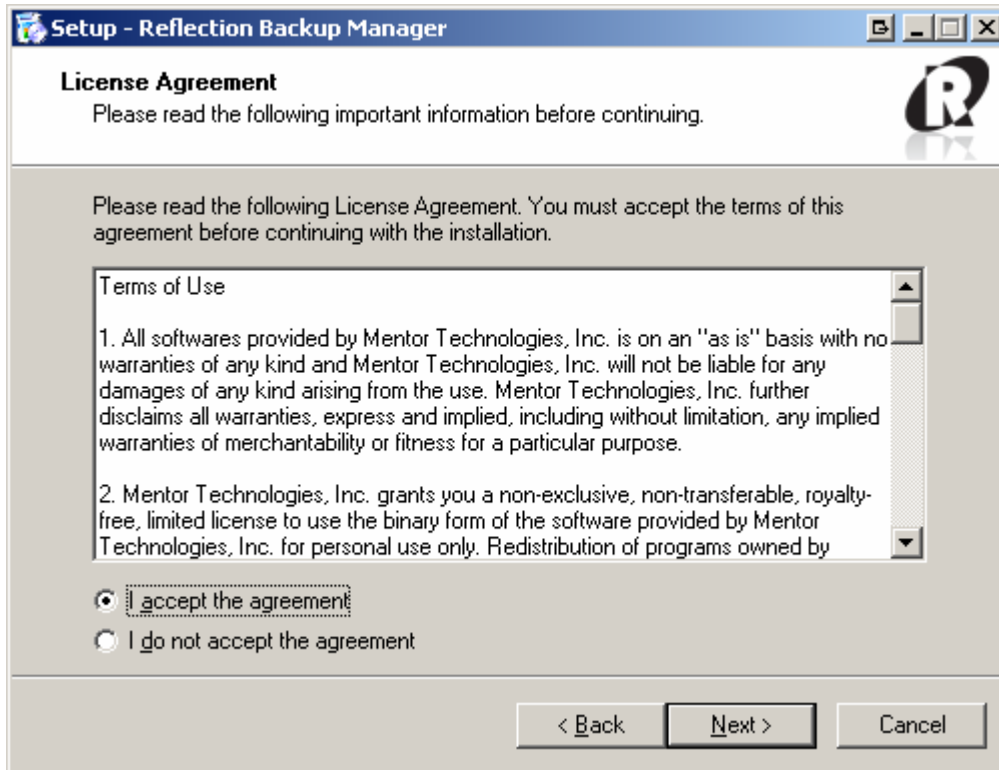
2. Choose the proper language and click 'OK'.



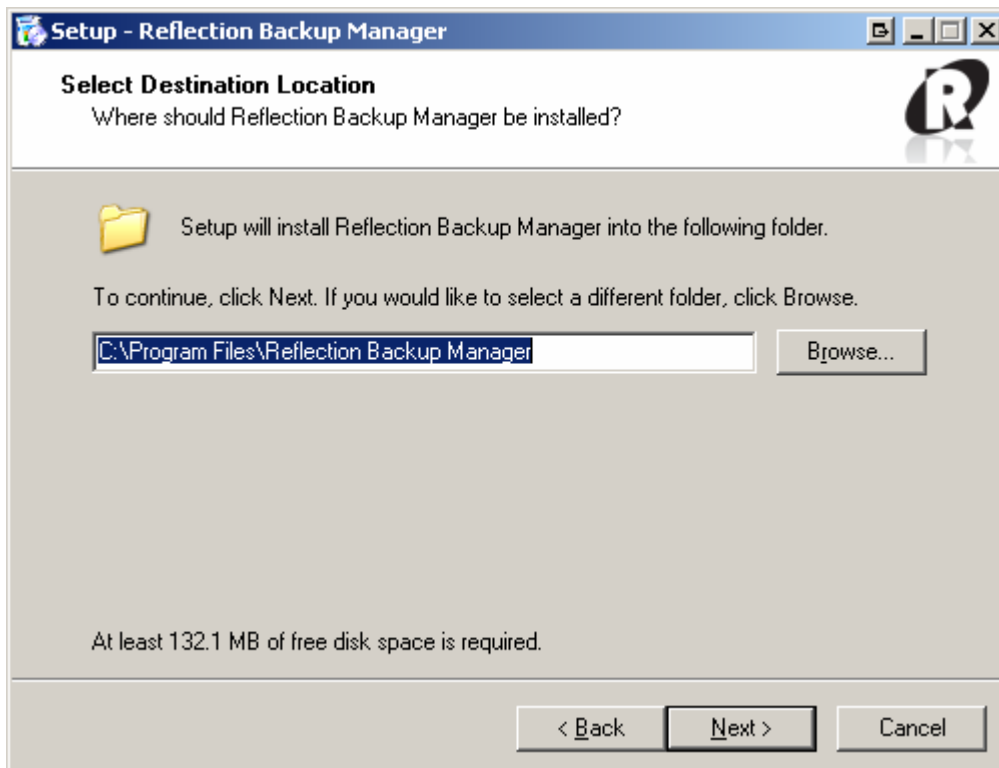
3. Click 'Next'.



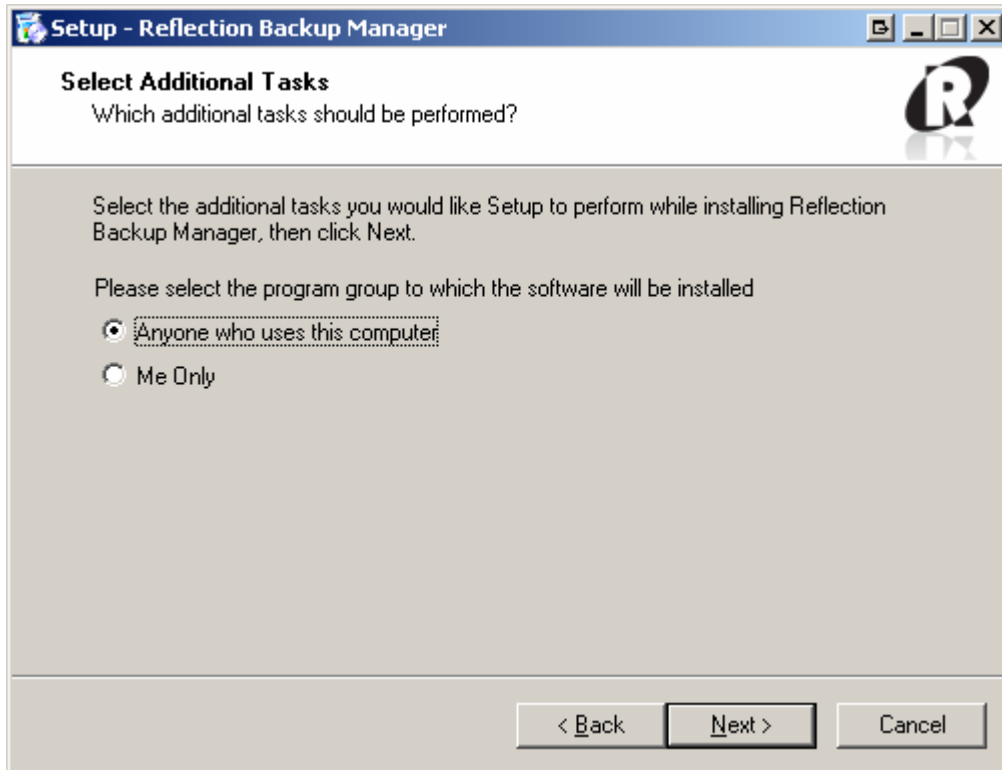
4. If you agree to the terms of use, click the button 'I accept' and then click 'Next'.



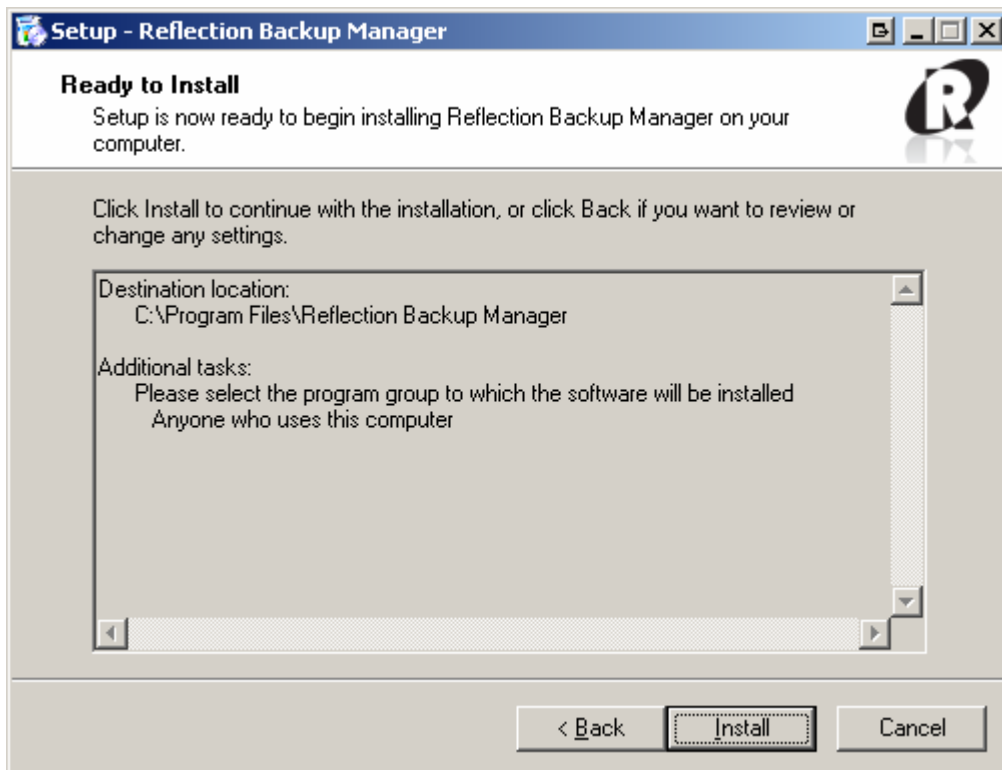
5. Use the default location or modify to fit your needs, then click 'Next'.



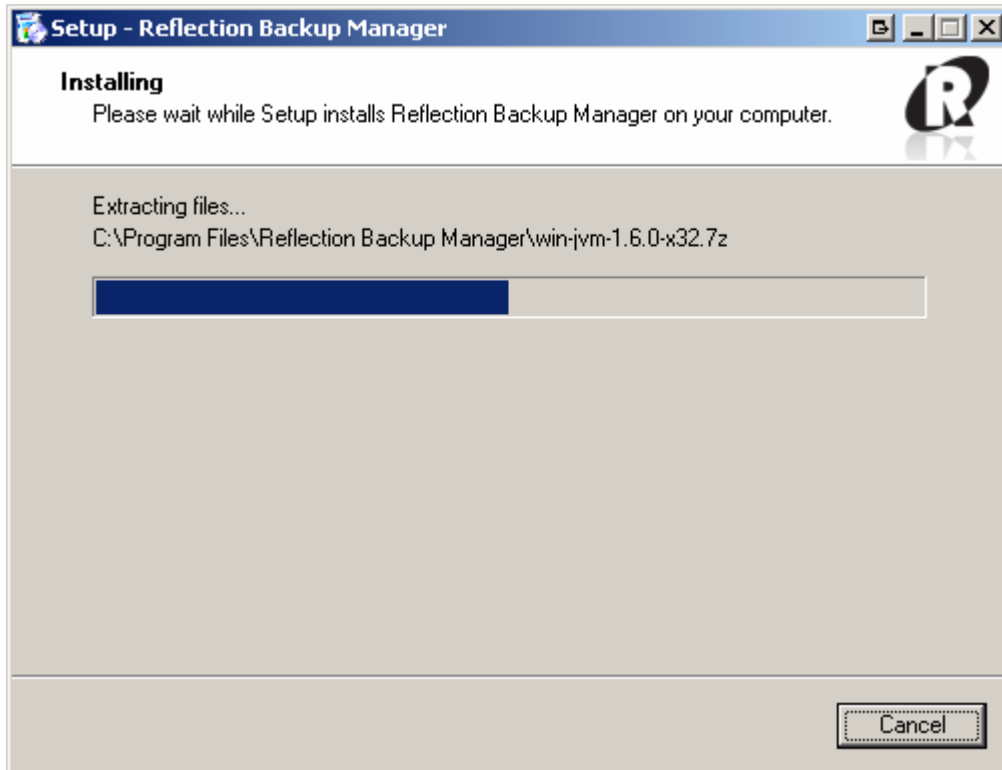
6. Select if you want to share this application on the system, then click 'Next'.



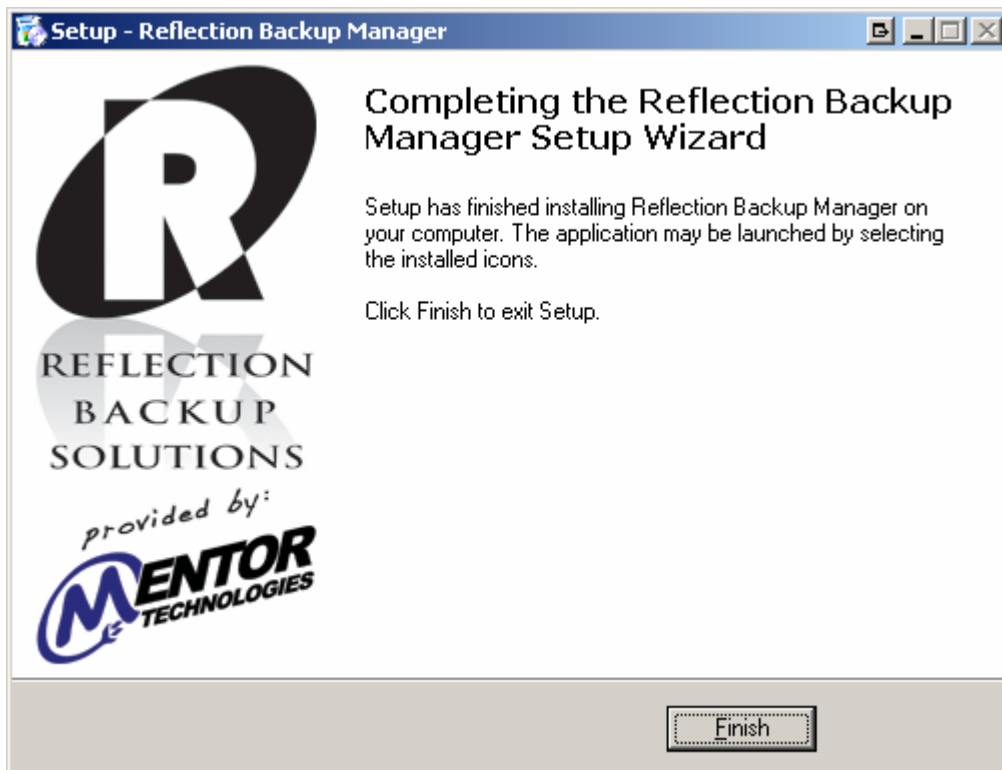
7. Once you review your installation choices, click 'Install'.



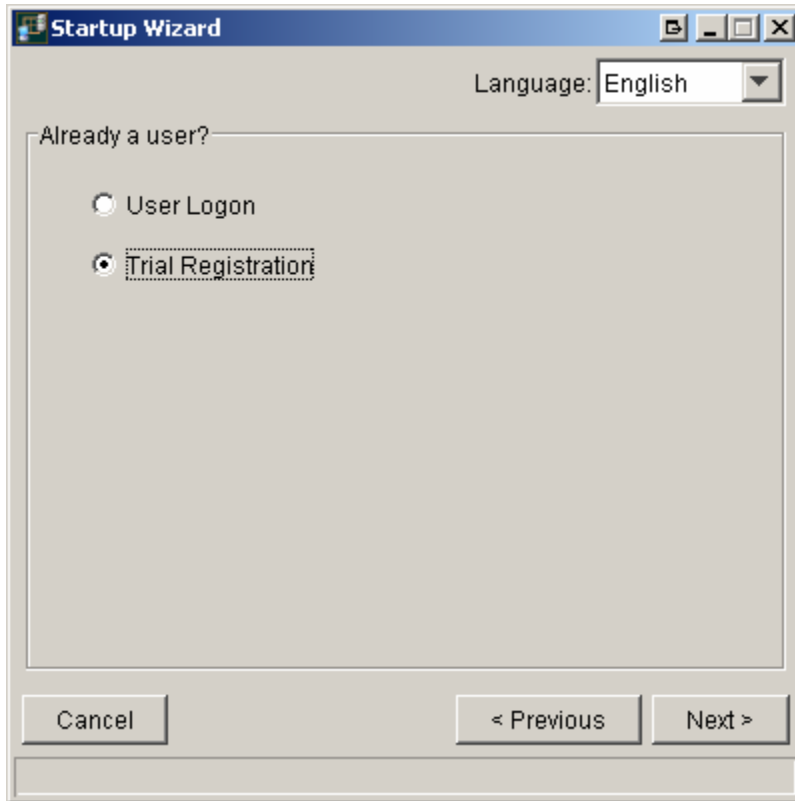
8. The installation process will begin.



9. After the installation process is complete, click 'Finish'.



10. After the installation the setup wizard will begin. Please choose 'Trial Registration' and click 'Next'.



Startup Wizard

Language: English

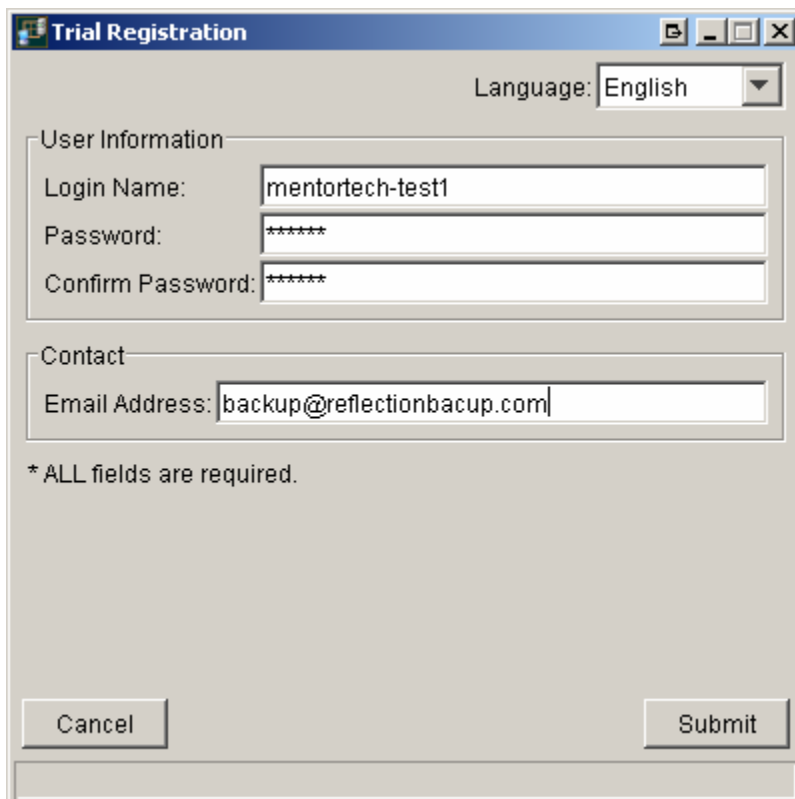
Already a user?

User Logon

Trial Registration

Cancel < Previous Next >

11. Enter in the login name given to you on the download page. Create your own password and save it in a safe place. Then enter the email address you would like your backup logs to be sent to, and click 'Submit'.



Trial Registration

Language: English

User Information

Login Name: mentortech-test1

Password: *****

Confirm Password: *****

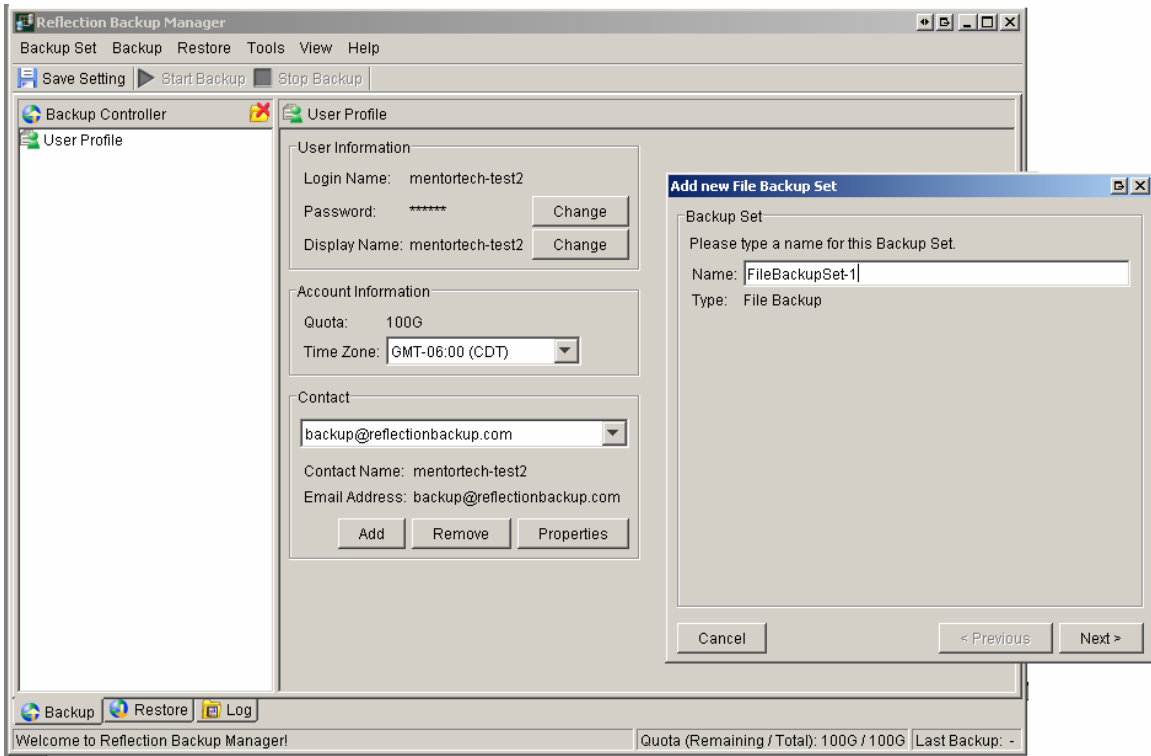
Contact

Email Address: backup@reflectionbacup.com

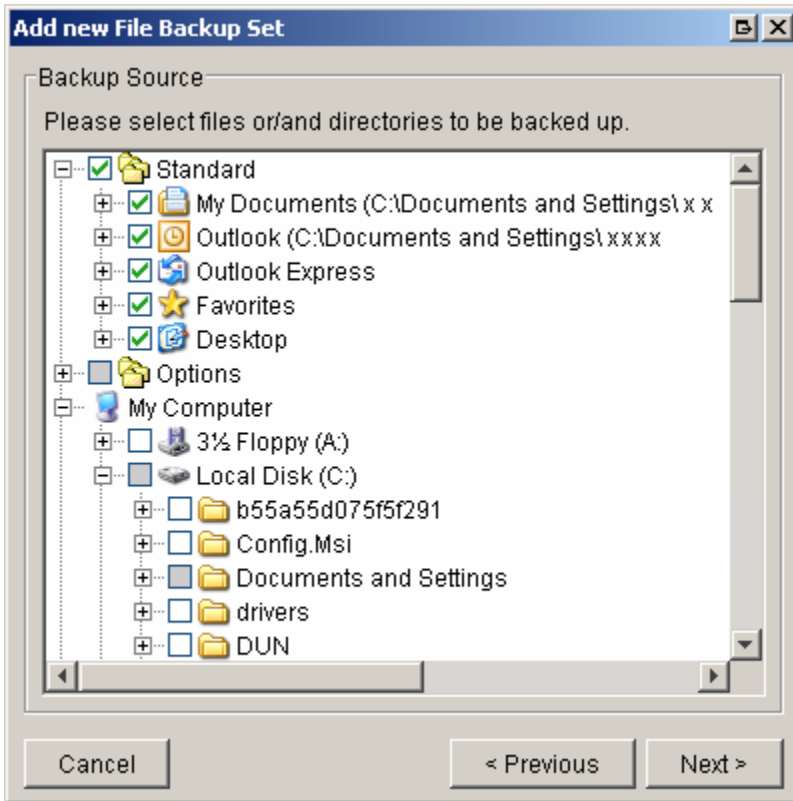
* ALL fields are required.

Cancel Submit

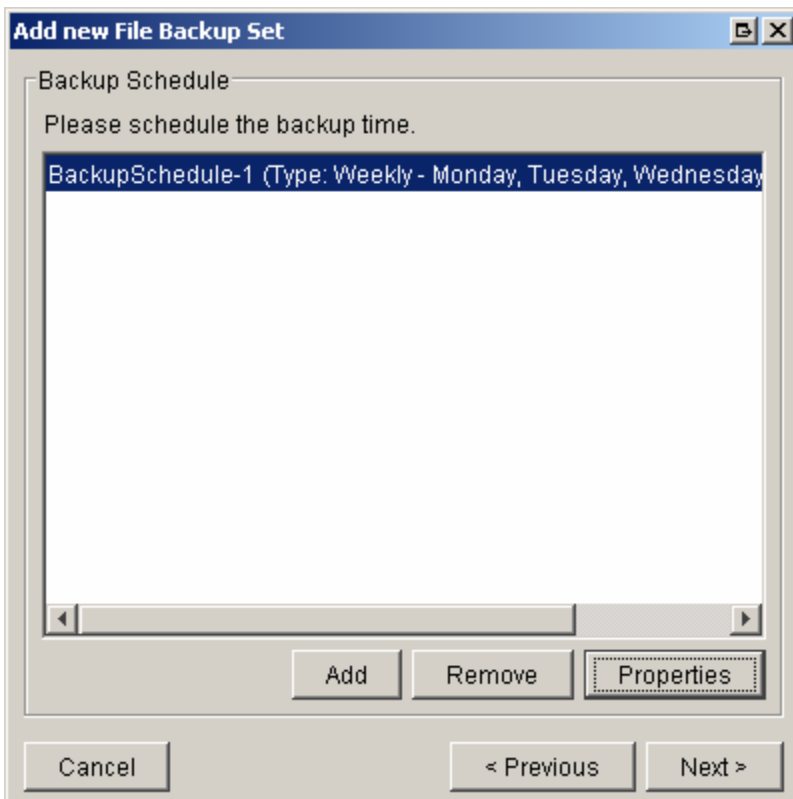
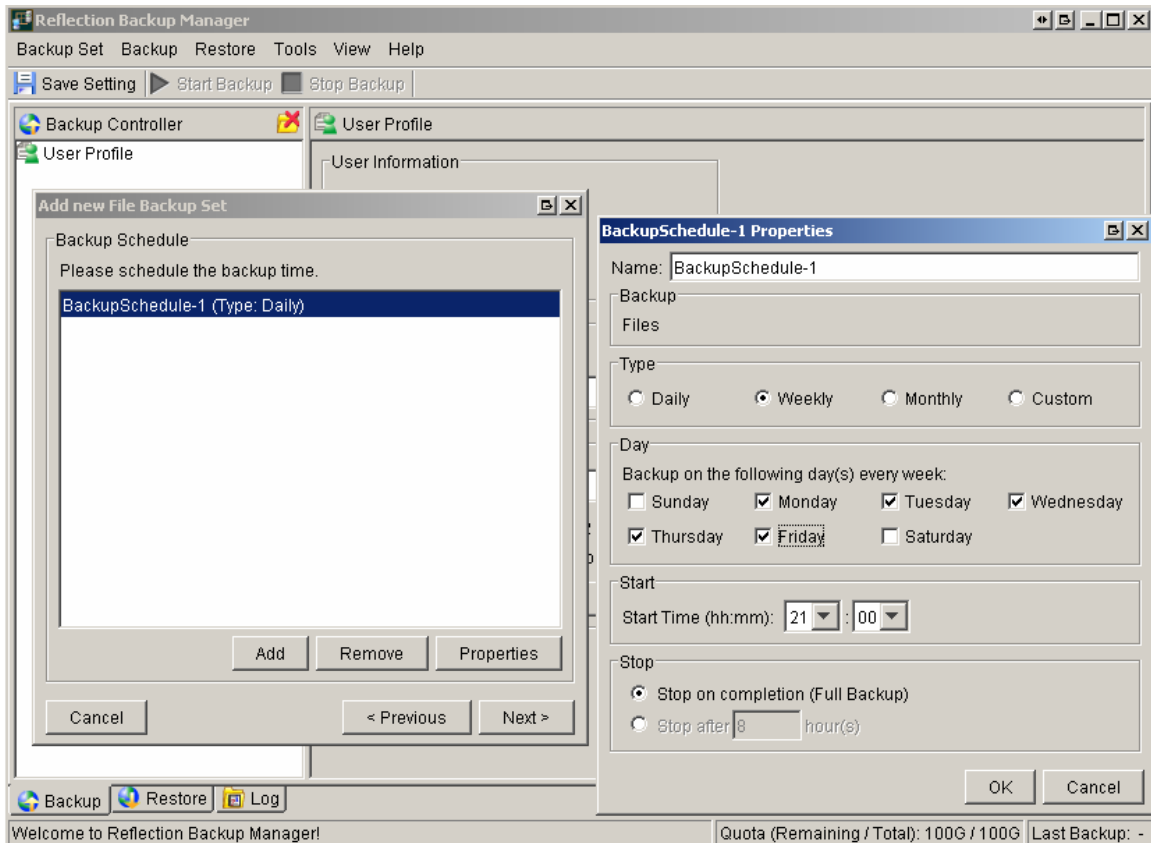
12. Create a name for your backup set, then click 'Next'.



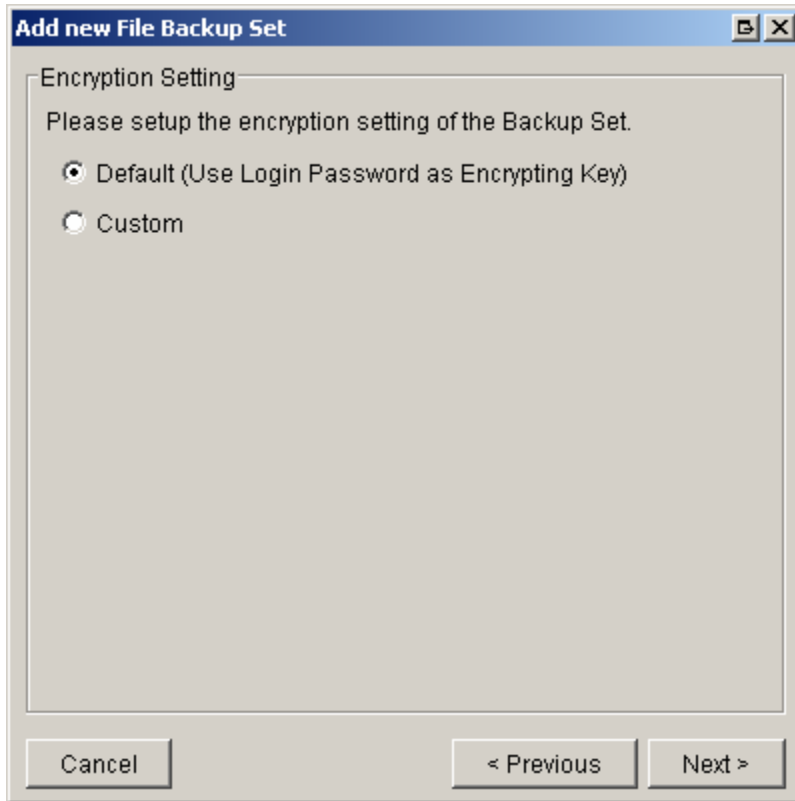
13. Choose the files you would like to backup to our servers, then click 'Next'.



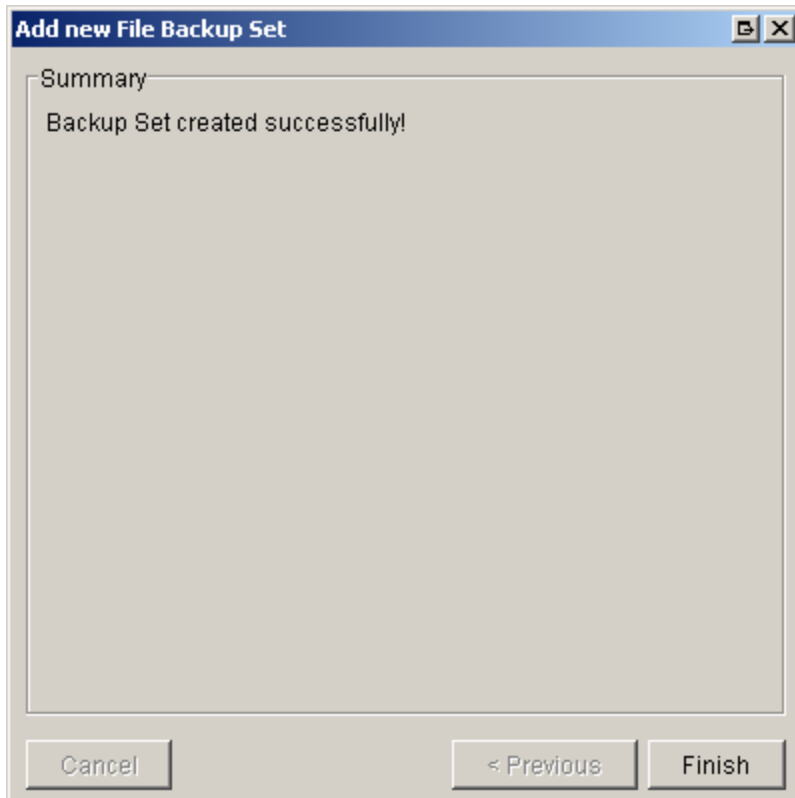
14. Choose the frequency of your backup, then click 'Next'.
(RBS recommends on workstations and servers alike, a weekly backup routine as shown below. You may access this window by clicking 'Properties' on the Backup Schedule Pane.)



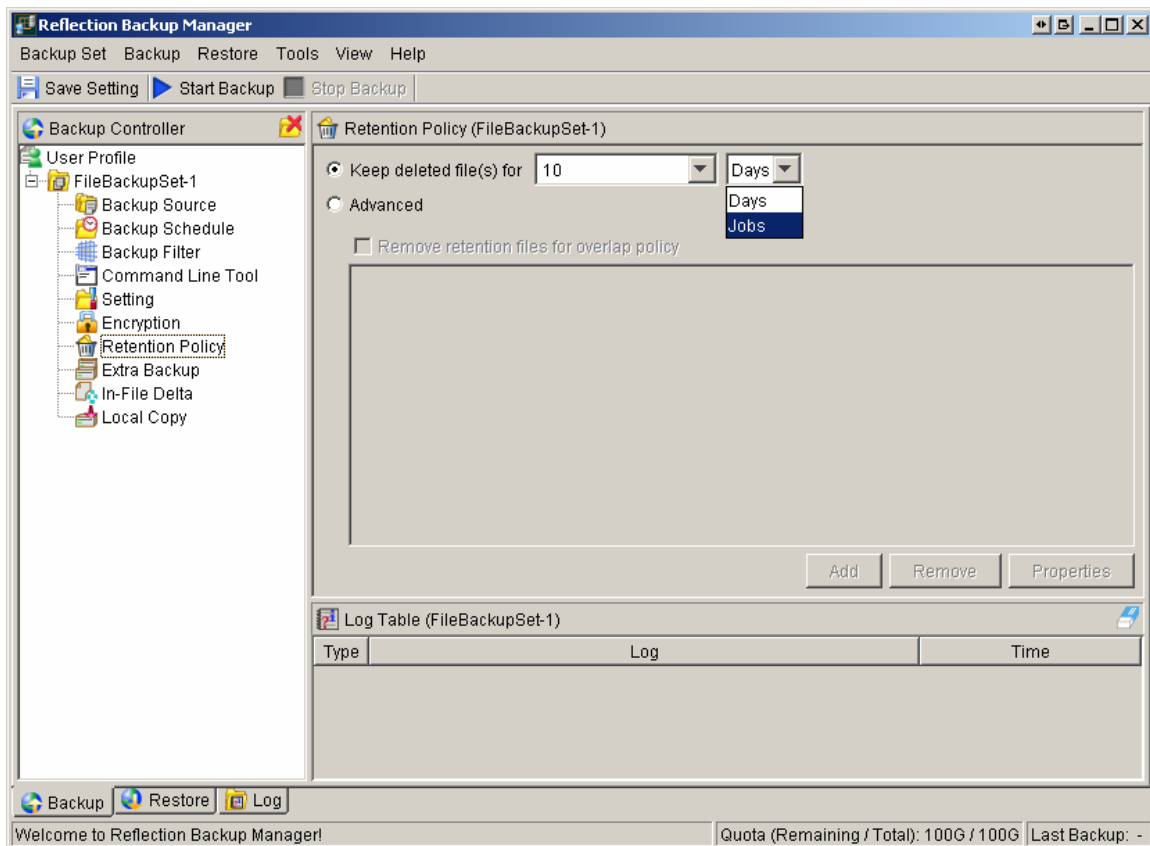
15. You may select the default encryption (AES with Cipher Block Chaining), or for more advanced users you may choose 'Custom', and then click 'Next'.



16. This completes the installation and file backup set. Click 'Finish' to complete.



17. RBS recommends setting your retention policy up similar to a 2-week tape backup. In order to do this please click on 'Retention Policy' and select 'Keep deleted file(s) for 10 Jobs'. This will increase the amount of space used on our servers depending on how many changes are made in that period to the data being backed up, but giving you maximum data security.



18. Congratulations! You have completed the installation and setup of your online data backup regiment. Here are a few things you should know to get started:

1. The initial backup time will vary from a few hours to a few days depending on the amount of data being backed up.
2. Installation information for creating backup sets for server based products are included in the User Guide.
3. Feel better knowing that your data is safely backed up every night without human or equipment error!